

GIVE. ADVOCATE. VOLUNTEER.



Capital Area United Way 2015 Annual Report

LIVE UNITED

Capital Area United Way

capareaunitedway.org

facebook.com/capareaunitedway

United
Way



Capital Area United Way

Table of Contents

Capital Area United Way 2015 Board of Directors 3

Letter from the Executive Director 4

Letter from the President of the Board of Directors 4

Capital Area United Way 2015 Partner Agencies 6

Capital Area United Way Community Impact Programs 7

Capital Area United Way 2015 Allocation Distribution 8

Capital Area United Way Community Impact Programs 9

Capital Area United Way Mission

“To increase the organized capacity of people to care for one another.”



Capital Area United Way 2015 Board of Directors



Paul Knecht
Board President

South Dakota
Dental
Association



Twyla
Bartholomew
First Vice
President



Paul Turman
Second Vice
President

Board of Regents



Murray Thompson
Immediate Past
President

Pierre Dental
Clinic



Chris Maxwell
Board Member

Maxwell
Consulting



Janelle Toman
Secretary

Board of Regents



Mike Gibson
Treasurer

BankWest



Anita Wylie
Board Member

CommTech



Darla Mayer
Board Member

Pierre School
District



Jeff Miller
Board Member

Delta Dental



Karl Richards
Board Member

Avera Medical
Associates



Laura Schoen
Carbonneau
Board Member

Pierre Chamber
of Commerce



Laurel Sharp
Board Member

State of South
Dakota



Linda Taylor
Board Member

Avera St. Mary's



Lori Roberts
Board Member

PryntComm



Maddie Sutton
Youth Board
Member

T.F. Riggs
High School



Martee Larson
Youth Board
Member

Stanley County
High School



Pat Anderson
Board Member

Anderson Dental



Renee Gallagher
Youth Board
Member

T.F. Riggs
High School



Stephanie Roberts
Board Member

U.S. Probation
Office



Tom Hart
Board Member

State of South
Dakota



Tony Farnen
Board Member

First National
Bank



Verne Brakke
Board Member

Brakke Financial
Services



Wendy Jones
Board Member

Stulken, Petersen,
Lingle, Walti &
Jones LLP

Letter from the Executive Director & President of the Board



By helping to fund our partner agencies, the Capital Area United Way is able to help our community meet its health and human care needs. The work of our partner agencies is incredibly important to the wellbeing of all of us that live and work here. Our work to raises funds on behalf of these organizations is also important.

The Capital Area United Way as the unique opportunity, and responsibility, to bring together members of the community in order to raise and distribute funds that will help our neighbors who can least help themselves. This past year has been a year of growth and opportunity for the Capital Area United Way. We concluded our 2014 campaign by reaching our goal of \$555,000. Thank you to Laurie and Bob Gill for all of their work as co-chairs of the 2014 campaign. Shortly after reaching our goal the United Way Board held a retreat where we set a 2015 campaign goal of \$575,000. At the time of publication we are well on our way to realizing that goal. Thank you to Sheila and Tony Mangan for their work as our 2015 campaign co-chairs. The generosity and support of this community is nothing short of amazing. There are few communities of our size in the Nation that receive the level of support that our United Way receives.

In cooperation with our partner agencies and the community, the Capital Area United Way is poised to do great things again this year. We are blessed with a great executive director, a diverse and engaged board of directors and a very generous community. It's been an honor for me to play a small role in helping the United Way do its job. Live United!

Paul



Dear Friends,

I am very pleased to present the first ever Capital Area United Way Annual Report for 2015. 2015 was our 27th year of service in Hughes and Stanley counties, and was a year a phenomenal year of growth for the Capital Area United Way.

Thank you to our volunteer Board of Directors for leading us in the direction of success and allowing us to take risks to help out those in need Hughes and Stanley counties. I would also like to personally thank the leaders in our Partner Agencies for showing me that “Alone we can do so little; together we can do so much” (Helen Keller). You are true heroes in our community, and I cannot thank you enough for your work.

Finally, thank you to all the individuals, businesses, organizations and government agencies that gave to the campaign. Our Partner Agencies depend on your generosity, and I have personally seen the impact your dollars make on individuals in our community. Thank you for creating opportunities and inspiring hope for a better tomorrow.

Christina Oey

Capital Area United Way Partner Agencies

Agency	CAUW Funded Program
American Red Cross	Single Family Disaster, Disaster Education, Disaster Response Supplies & Volunteer Disaster Training
Capital Area Counseling	Boys and Girls Club of the Capital Area, Teen Court
Central SD Child Assessment Center	Comprehensive Medical Evaluations
Central SD RSVP	Reading Buddies
Community Youth Involved Center	Senior Nutrition Program, After School/Latchkey, Summer Recreation
Consumer Credit Counseling Services	Credit Counseling
Feeding South Dakota	Pierre Fresh Produce
Girl Scouts-Dakota Horizons	Girl Scout Leadership Experience
Growing Up Together	Prenatal Education, Parenting Education
Missouri Shores Domestic Violence Center	Shelter, Support & Awareness
Oahe Child Development Center	Literacy Program
Oahe Family YMCA	Membership subsidies, Afterschool/Day Camp, Youth Sports & Swim Lessons
Oahe Inc.	Recycle for Life, Social Skills Training
Pierre Area Referral Service	Food Pantry, People's Fund, Backpack Program, Basic Budgeting & Cooking
Sioux Council Boy Scouts	Scouting Program
South Dakota Discovery Center	Hands-On Science for Kids
Southeast Community Center	Community Banquet
The Right Turn	Literacy/ESL Program
Urban Indian Health	Medical Equipment, Immunizations
Western Resources for Independent Living	Home Modifications, Adaptive Equipment

Capital Area United Way Community Impact Programs

Girls on the Run/Girls on Track

These two programs are dedicated to educating and preparing girls for a lifetime of self-respect and healthy living. Girls on the Run/Track inspires girls to be joyful, healthy and confident using fun, experience-based curriculum which creatively integrates running and other physical activities.

Classroom Mini Grants

Classroom Mini Grants are given grants given to schools to help meet unusual, basic needs of students and to compensate teachers who pay out of pocket to see their students succeed.

Dakota Smiles

The Capital Area United Way proudly sponsors the Delta Dental Dakota Smiles mobile dental program in order to help provide needed dental care to underserved children and youth.

Imagination Library

Carefully selected books are mailed FREE to children age 0-5 in Hughes and Stanley County.

Scoop-It!

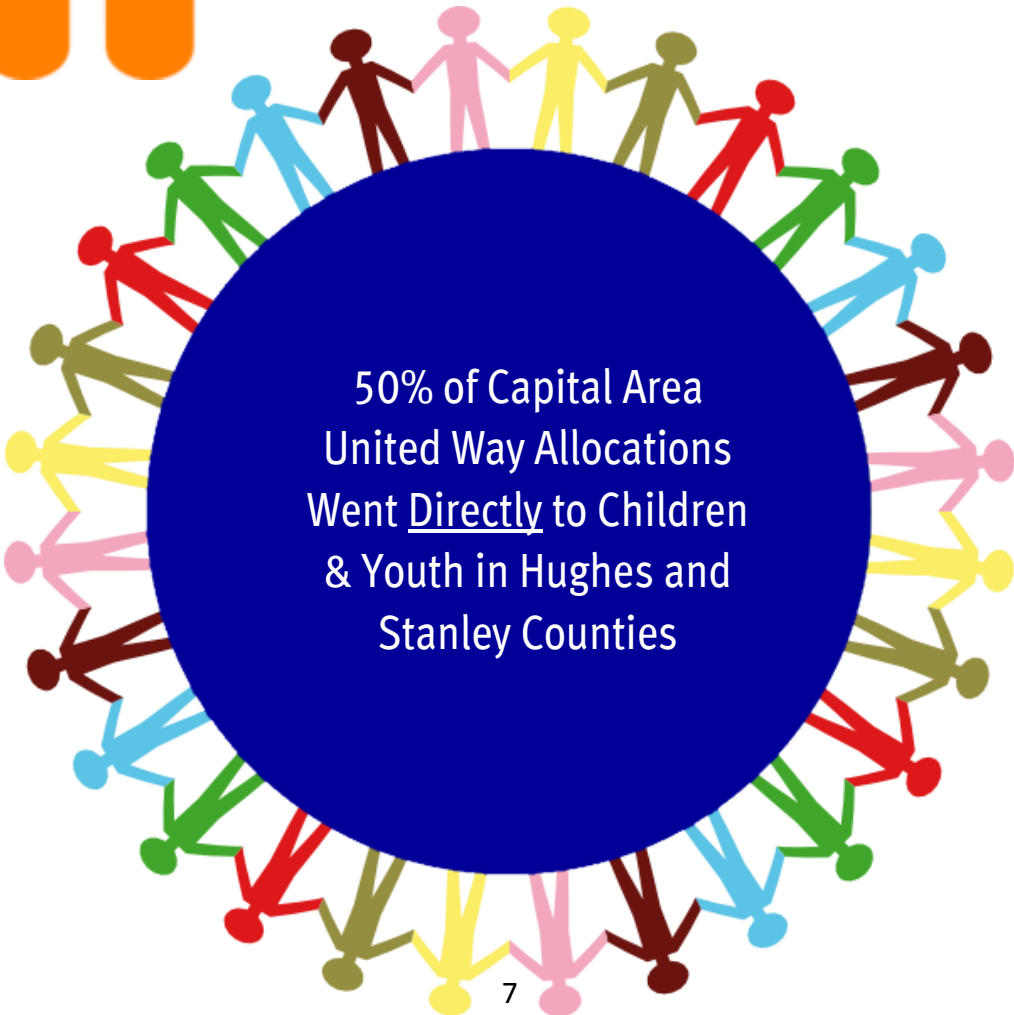
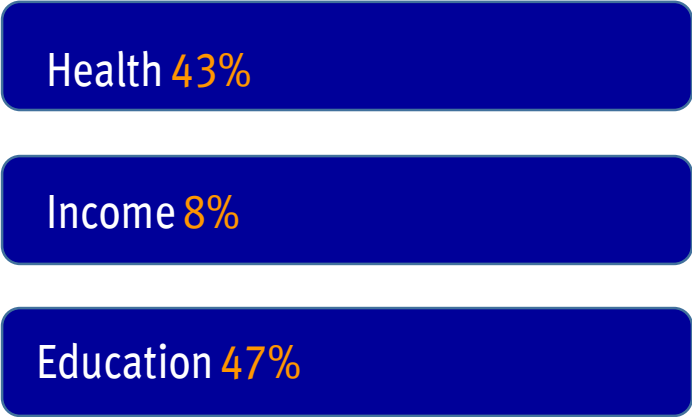
Elderly and disabled homeowners can receive free snow removal, thanks to our partnership with the State of South Dakota. Participants avoid fines, meet city snow removal requirements and also walk safely around the outside of their home.

Youth Booster Fund

YBF provides mini-grants to youth-serving organizations, or youth themselves, in order to meet the unique needs of young people in our community.



Capital Area United Way Allocation Distribution



Capital Area United Way Community Partners

Thanks to our Community Partners, the Capital Area United Way is able to help our neighbors in Hughes and Stanley counties. We salute these businesses and organizations for successful workplace campaigns that are vital to the health of our community.

Aaron Swan & Associates
Acorn Trust Company
Al's Oasis
All-Around Graphix
American Bank & Trust
Anderson Dental Inc.
Angel's Salon
Arctic Glacier
Audiology Associates
Avera Medical Associates Clinic
Avera St. Mary's Hospital
Bad River Surplus, Inc
Bales Chiropractic
BankWest
Dr. Monty Bechtold
Beck Motor Company
Big Tom's Diner
Bixler Tree Service, Inc.
Board of Regents
Boyd Conzemius Agency
BPRO, Inc.
Brakke Financial Services
Bureau of Administration
Bureau of Human Resources
Bureau of Information &
Telecommunications
Butler Machinery
Card & Candy Shop
Cathy Sonnenschein Properties
Cattleman's Club
Century Business Products
CenturyLink Clarke M. Williams
Foundation
Chandler's Auto Glass
Coca Cola - Chesterman Co.
CommTech
Cone Ag, Inc
Cowboy Country Stores

Cultural Heritage Center
Dakota Business Center
Dakota Prairie Bank
Dakota Rent To Own
Delta Dental of SD
Dept. of Environment & Natural
Resources
Dept. of Game Fish & Parks
Dept. of Human Services
Dept. of Labor & Regulation
Dept. of Revenue & Regulation
Dept. of Social Services
Dept. of Tourism, Arts & History
DJ's Convenience Store
Dr. Jill Hart
Eagle Sales
Eaglecarver Financial Network
Envirotech Waste Services
FedEx
Ferding Electric
Fine Line Auto, Inc.
First National Bank
First National Bank - Fort Pierre
Fort Pierre Motel
Foster Rentals
Friman Oil & Gas
Gary Snow & Associates
Golden Living Center
Governor's Office
Governor's Office of Economic
Development
Graham Tire Company
Guadalajara Mexican Restaurant
H & R Block
Hair Affair
Hillsview Golf Shop
Hogen's Hardware Hank
Home Federal Bank

Hughes County
Hughes County Abstract
Ingram Pest Service
Isburg Funeral Home
JCPenney
La Minestra
Lutheran Memorial Church
M & R Signs & Billboards
Marco, Inc.
MicroFix, Inc.
Midcontinent Employee Giving
Midwest Construction
MN Wireless
Montana Dakota Utilities
Morris, Inc.
Mortenson Law Offices
Mustang Aviation
Nationwide/Supplemental
Retirement Plan
Nystrom Electrical Contracting
Oahe Federal Credit Union
Palmer, Currier & Hoffert, LLP
Pepsi-Cola Bottling Company
Personal Group, Inc.
Petersen Harley Davidson
Pierre Indian Learning Center
Prairie Traders
Premier Property Real Estate
PryntComm
Ramkota
River Life Newspaper
Robins Water Conditioning
S & R Promotional Specialties
Sarah's Dance Studio
Schmitz Financial Group Inc.
Scott's Barber Shop

SD Community Foundation
SD Discovery Center
SD Education Association
SD Housing Development Authority
Servicemaster of Pierre
Shane's Pharmacy
Shopko
Siebrasse Law Office
Stanley County
Stanley County Schools
State Auditor
State of South Dakota
State Prison for Women
Stulken, Petersen, Lingle, Walti &
Jones
Teton River Traders Gun Shop
The Donut Shop
The Paint Store
The Visiting Vet
Dr. Murray Thompson
TMA Pierre
Travel Leaders
Twin City Turf
Unified Judicial System
United Parcel Service
US Bank
Vilas Pharmacy
Wal-Mart
Walmart Foundation
Weather All Roofing
Wegner, Helen
Wells Fargo Bank
Whistlestop
Will Clark Electric
Willard & Associates
WW Tire Company

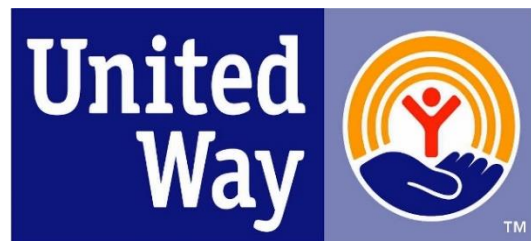
Thank You!

Want to stay up-to-date on the latest Capital Area United Way news, and hear about the great work of our Partner Agencies?

Here's how:

Connect with us on Facebook: facebook.com/capareaunitedway

Visit our Website: www.capareaunitedway.org



Capital Area United Way