

About Capital Area United Way

The Capital Area United Way is an independent, non-profit entity designed to help our community meet its health and human care needs.

Through its community-wide fundraising efforts, the Capital Area United Way helps to support 50 programs and services offered through 20 local United Way funded agencies and United Way Community Impact programs.

Through a strong volunteer system, United Way brings together business, government, and committed people to address local health and human service needs in Hughes and Stanley counties.

Leadership Giving

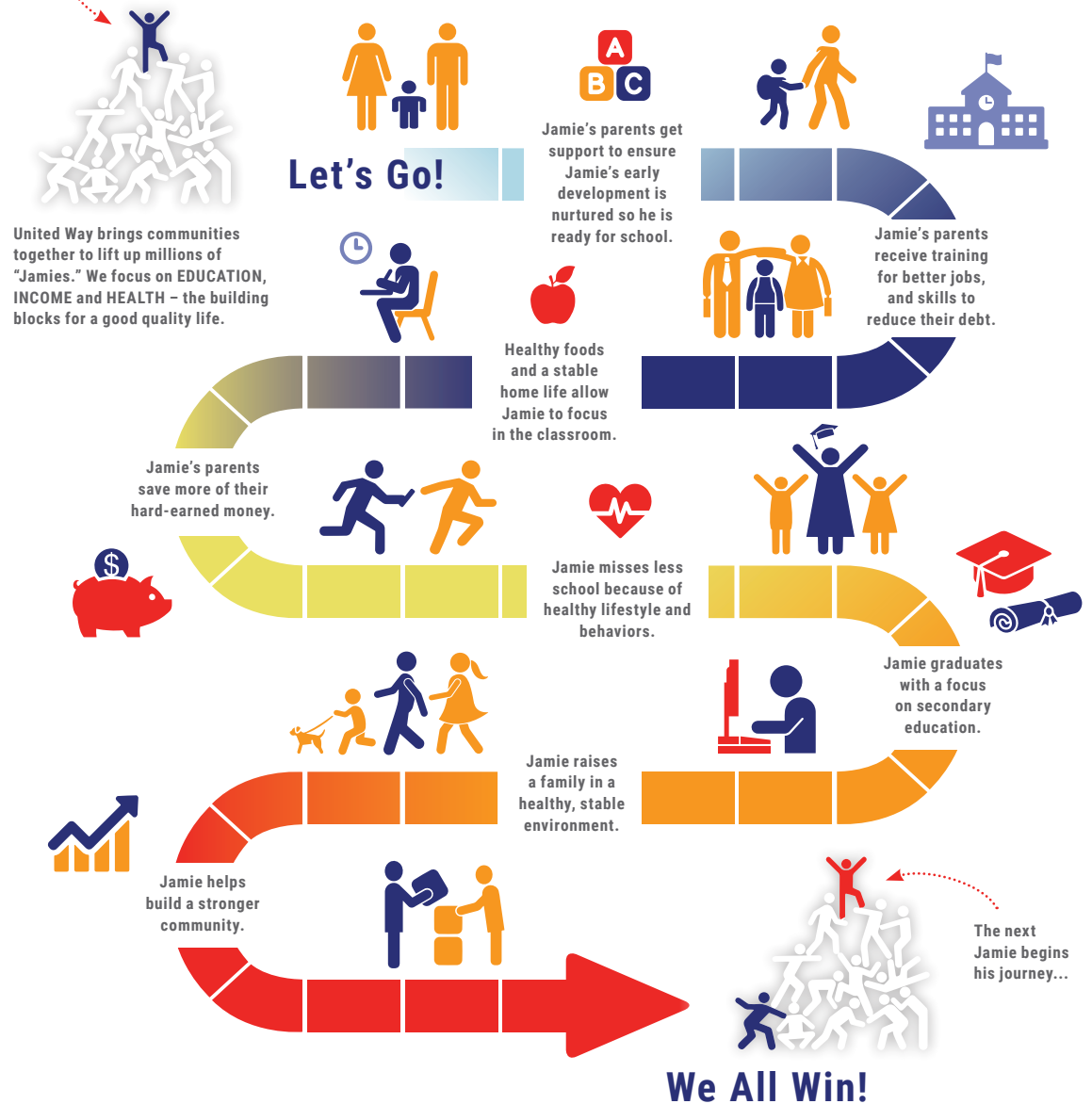
The Capital Area United Way Heart Club and Tocqueville Society give recognition to donors who are committed to addressing our community's most pressing needs by making a significant contribution to our annual campaign. Leadership givers are vital to the success of our work; we encourage everyone to consider becoming a leadership giver! Leadership giving levels:

- ♥ **Rising Heart:** \$500 – \$999
- ♥ **Grand Heart:** \$1,000 – \$2,999
- ♥ **Gold Heart:** \$3,000 – \$4,999
- ♥ **Diamond Heart:** \$5,000 – \$9,999
- ♥ **Platinum Heart:** \$10,000 – \$49,999
- ♥ **Titanium Heart:** \$50,000 +

The Capital Area United Way Tocqueville Society consists of leaders committed to improving our community who give at least \$10,000 annually. Please contact us if you are interested in learning more about the Tocqueville Society!

Where the Money Goes...

Meet Jamie, he is a child who wants to succeed.
All he needs is an opportunity.



To learn more about how even a small change can strengthen your community, check out our interactive Common Good Forecaster at www.UnitedWay.org/forecaster.

capareaunitedway.org



facebook.com/capareaunitedway